

## All Day Everyday Premium Standard Inclusions



**Corella 22**(22.64SQ)

4  2  2 

**Lot 3031 Angelica Circuit - Aspire**  
(350m<sup>2</sup>) 12.50x28m

**Luxe Turnkey**  
Available From

**\$726,400\***

**FOR A LIMITED TIME**

**Save  
\$30,000  
ON LAND**

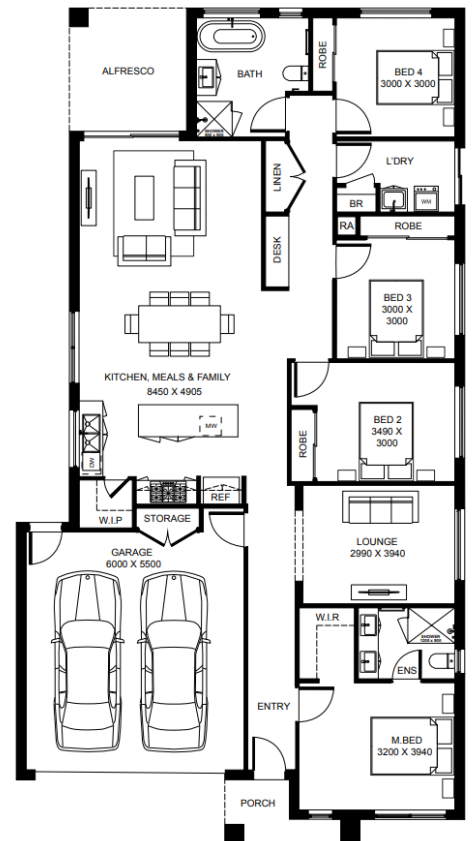
**Land Price: \$417,900**

**Anticipated Title: *TITLED***



**Luxe Turnkey**

- Full Turnkey Package Including Front, Side & Rear Landscaping with Letterbox, Clothesline & Half Share Fencing
- Exposed Aggregate Driveway, Porch & Alfresco (Plan Specific)
- 2590mm High Ceilings Throughout
- Brickwork Above all Windows, External Doors & Garage
- Evaporative Cooling to all Bedrooms & Living Areas
- Lithostone 40mm square Edge to Kitchen & Island Bench & 20mm Square Edge to Ensuite & Bathroom
- 900mm Upright Oven and Cook Top with Canopy Rangehood & Stainless-Steel Dishwasher
- Tiled Shower Bases, Semi-Frameless Shower Screens and Niches to both En-suite & Bathroom Showers
- Double basins in En-suite & Deluxe Large Vanity
- Free Standing Bath
- Mirrored Sliding Robe Doors (Built-in Robes)
- LED Downlights Throughout the Entire Home
- Block-out Roller Blinds
- Flyscreens & Window Locks to All Openable Windows
- Choice of Floor Tiles or Hybrid Flooring to Kitchen, Meals & Hallway
- Choice or Carpet to all Bedrooms
- 7 Star Energy Rating with Any Standard Plan on any Orientation
- 3.5KW Solar PV System
- Continuous Flow Hot Water System



*\*Turnkey Specs Floorplan Shown*

**W:** [www.dbnhomes.com.au](http://www.dbnhomes.com.au) **E:** [navin.c@dbnhomes.com.au](mailto:navin.c@dbnhomes.com.au) **M:** 0413 561 628