



Willow Estate
Dalk Drive, Gisborne
Lot 1545

Facade: Olson

House: 37.15 sq **Land:** 1960 m2

4 3 3 2

Flynn 37

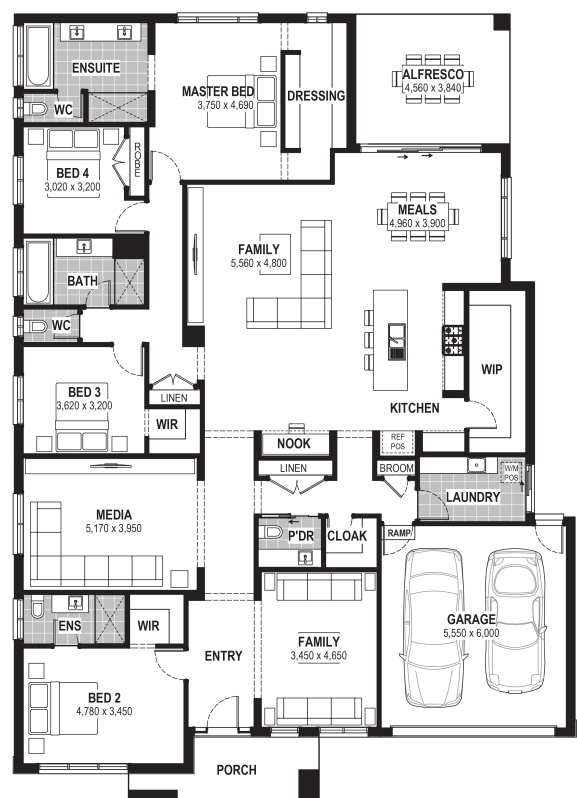
Inclusions

- Truecore Steel House Frame
- Colorbond Steel Roof (with Sarking)
- High Performance (uPVC) Double Glazed Safety Glass Windows & Doors
- 7 Star Energy Efficient to all orientations
- 7 x 440w Panels & 3KW Inverter (single phase)
- Bushfire Compliance to BAL 12.5
- 50 Year Structural Guarantee
- 2550mm Ceiling Heights
- Stone Benchtops to Kitchen
- 900mm Rangehood & Upright Cooker
- 2700mm Ceiling Height
- Big 40th Birthday Sale
- Caesarstone Benchtops to Kitchen & Vanities
- Carpet to Bedrooms
- Developer Guidelines Included
- Fixed Site Costs
- Laminate Flooring & Carpet Throughout
- NBN Fibre Package
- Reverse Cycle Heating & Cooling

Contact:

Stevan Bachtsevanos
0438603166
houseandland@jgking.com.au

Willow
GISBORNE



*Conditions apply. Speak to your New Home Advisor for further details