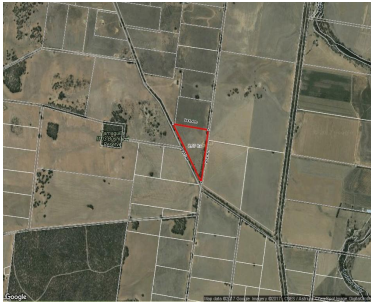


STATEMENT OF INFORMATION

TRIANGLE ROAD, NEWBRIDGE, VIC 3551

PREPARED BY FP NEVINS & CO REAL ESTATE PTY LTD

STATEMENT OF INFORMATION

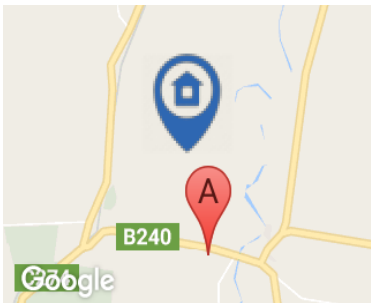


TRIANGLE ROAD, NEWBRIDGE, VIC 3551



Indicative Selling Price
\$55,000 to 60,500

SUBURB MEDIAN



NEWBRIDGE, VIC, 3551

Suburb Median Sale Price (House)
\$165,000

12 Months ending Mar '17

Provided by:  **pricefinder**

COMPARABLE PROPERTIES



2227 WIMMERA HWY, NEWBRIDGE, VIC 3551



Sale Price
Price Withheld

Sale Date: 21/12/2016

Distance from Property: 2.6km

