

Phong Ho

M 0432031601
E pho@barryplant.com.au

Section 47AF of the Estate Agents Act 1980

HOUSE Offered for Sale

81 Frontier Avenue Greenvale VIC 3059

 4  2  2

Indicative Selling Price

For the meaning of this price see consumer.vic.gov.au/underquoting

Range between \$560,000 & \$590,000

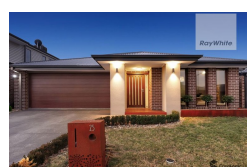
Median Sale Price

\$731,000 Houses in Greenvale between 01 Jul 2018 - 30 Jun 2019

Source: CoreLogic

Comparable Property Sales

These are the three properties sold within two kilometres of the property for sale in the last 6 months that the estate agent or agent's representative considers to be most comparable to the property for sale.



25 Lucy Crescent Greenvale VIC 3059

 4  2  2

Sold Price

\$566,000

Sold Date

16-May-19

Distance

1.76km



34 Edara Circuit Greenvale VIC 3059

 4  2  2

Sold Price

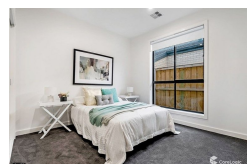
\$575,000

Sold Date

25-Jan-19

Distance

3.8km



16 Mietta Terrace Greenvale VIC 3059

 4  2  2

Sold Price

\$605,000

Sold Date

13-Jul-19

Distance

0.85km

RS = Recent sale

UN = Undisclosed Sale

DISCLAIMER Whilst all reasonable effort is made to ensure the information in this publication is current, CoreLogic does not warrant the accuracy or completeness of the data and information contained in this publication and to the full extent not prohibited by law excludes all for any loss or damage arising in connection with the data and information contained in this publication.

The State of Victoria owns the copyright in the Property Sales Data and reproduction of that data in any way without the consent of the State of Victoria will constitute a breach of the Copyright Act 1968 (Cth). The State of Victoria does not warrant the accuracy or completeness of the Property Sales Data and any person using or relying upon such information does so on the basis that the State of Victoria accepts no responsibility or liability whatsoever for any errors, faults, defects or omissions in the information supplied.