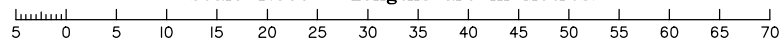


NOTES

- Approval Details – DA/34528/2017/V3RM Dated: 8 Sept 2017
- Final surface level information is as specified on Preliminary Operational Works drawings prepared by Walsh Consulting Engineers. All earthworks are to be carried out in accordance with AS3798–2007 guidelines on earthworks for commercial and residential developments. Supervision of bulk earthworks must be to Level 1 and the frequency of field density testing must be in accordance with Table 8.1 of AS 3798–2007.
- Levels shown are referenced to the Australian Height Datum (AHD)
- Levels, heights & depths shown hereon are approximate only and may vary from constructed values; values will not be deemed inaccurate for any variance up to +/- 0.5m
- This plan was prepared to satisfy s11 Land Sales Act 1984
- Builders shall not build off the design levels shown; a site survey is required.
- These notes are an integral part of this plan.

Scale 1:500 – Lengths are in Metres.



DISCLOSURE PLAN (Earthworks)

For Proposed Lots 15–37 & 602
to be shown on SP331084

(Currently Part of Lot 1 on RP215247)

Local Government: Moreton Bay R.C. Locality: Woodford

Plan No: 9867 Disclosure Stage 2

Scale: 1:500@A3

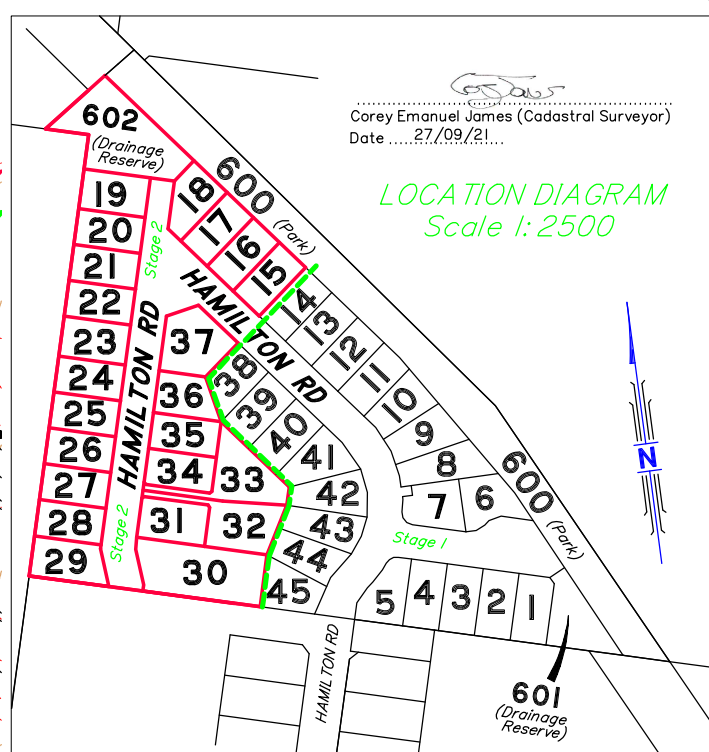
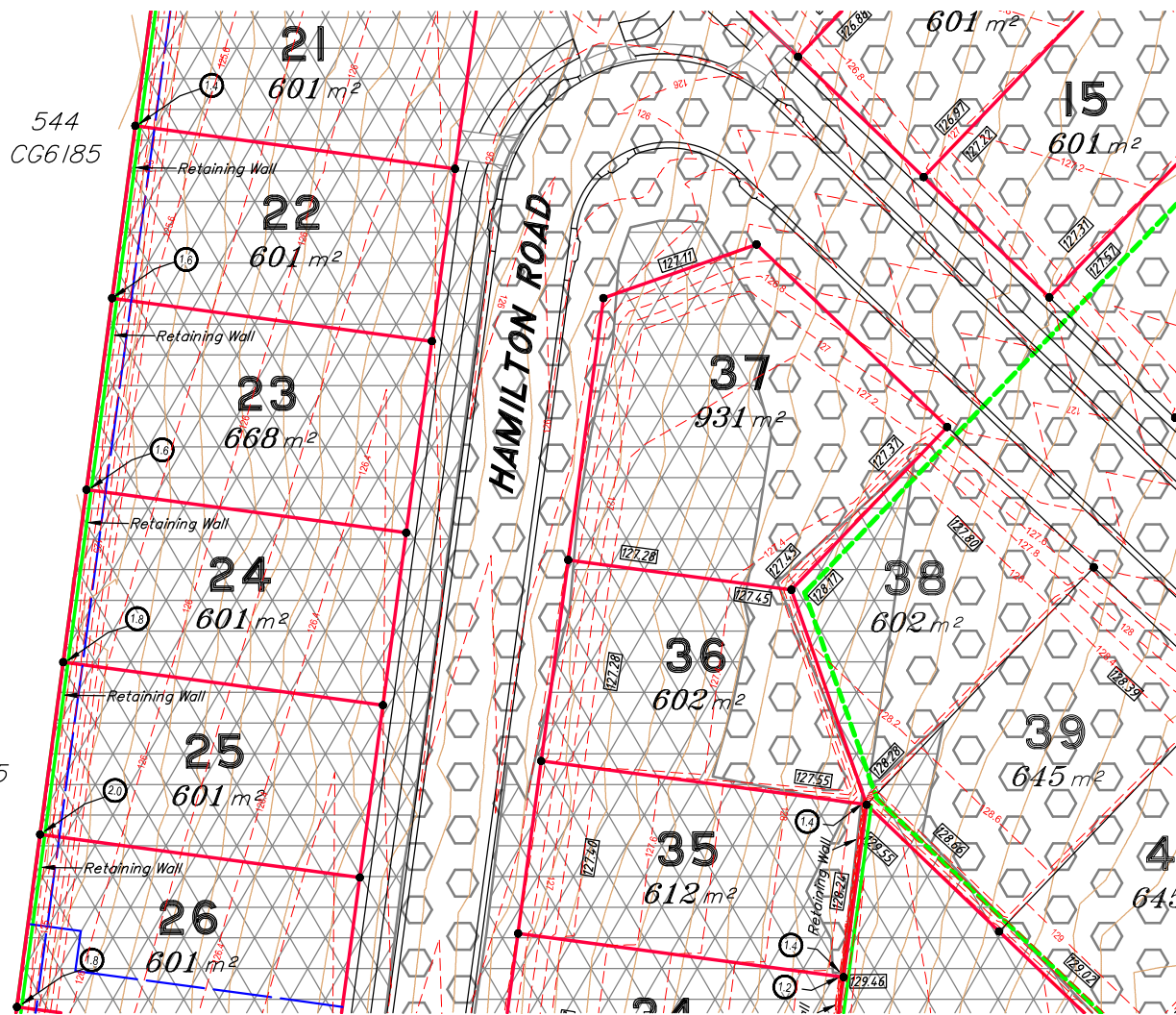
Prepared By: MN

Date: 27/09/21



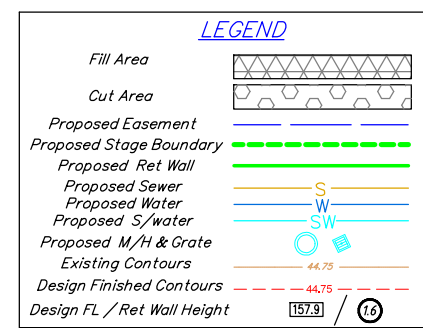
Suite 11C
Brightwater Corporate Centre
69 Attenuata Drive
MOUNTAIN CREEK QLD 4557
E: corey@skysurv.com.au
W: www.skysurv.com.au

PHONE
07 5493 4877



Corey Emanuel James (Cadastral Surveyor)
Date: 27/09/21

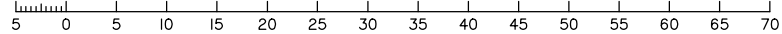
LOCATION DIAGRAM
Scale 1:2500



NOTES

- Approval Details - DA/34528/2017/V3RM Dated: 8 Sept 2017
- Final surface level information is as specified on Preliminary Operational Works drawings prepared by Walsh Consulting Engineers. All earthworks are to be carried out in accordance with AS3798-2007 guidelines on earthworks for commercial and residential developments. Supervision of bulk earthworks must be to Level 1 and the frequency of field density testing must be in accordance with Table 8.1 of AS 3798-2007.
- Levels shown are referenced to the Australian Height Datum (AHD)
- Levels, heights & depths shown hereon are approximate only and may vary from constructed values; values will not be deemed inaccurate for any variance up to +/- 0.5m
- This plan was prepared to satisfy s11 Land Sales Act 1984
- Builders shall not build off the design levels shown; a site survey is required.
- These notes are an integral part of this plan.

Scale 1:500 - Lengths are in Metres.



DISCLOSURE PLAN

(Earthworks)

For Proposed Lots 15-37 & 602
to be shown on SP331084

(Currently Part of Lot 1 on RP215247)

Local Government: Moreton Bay R.C. Locality: Woodford



Skyline Surveyors

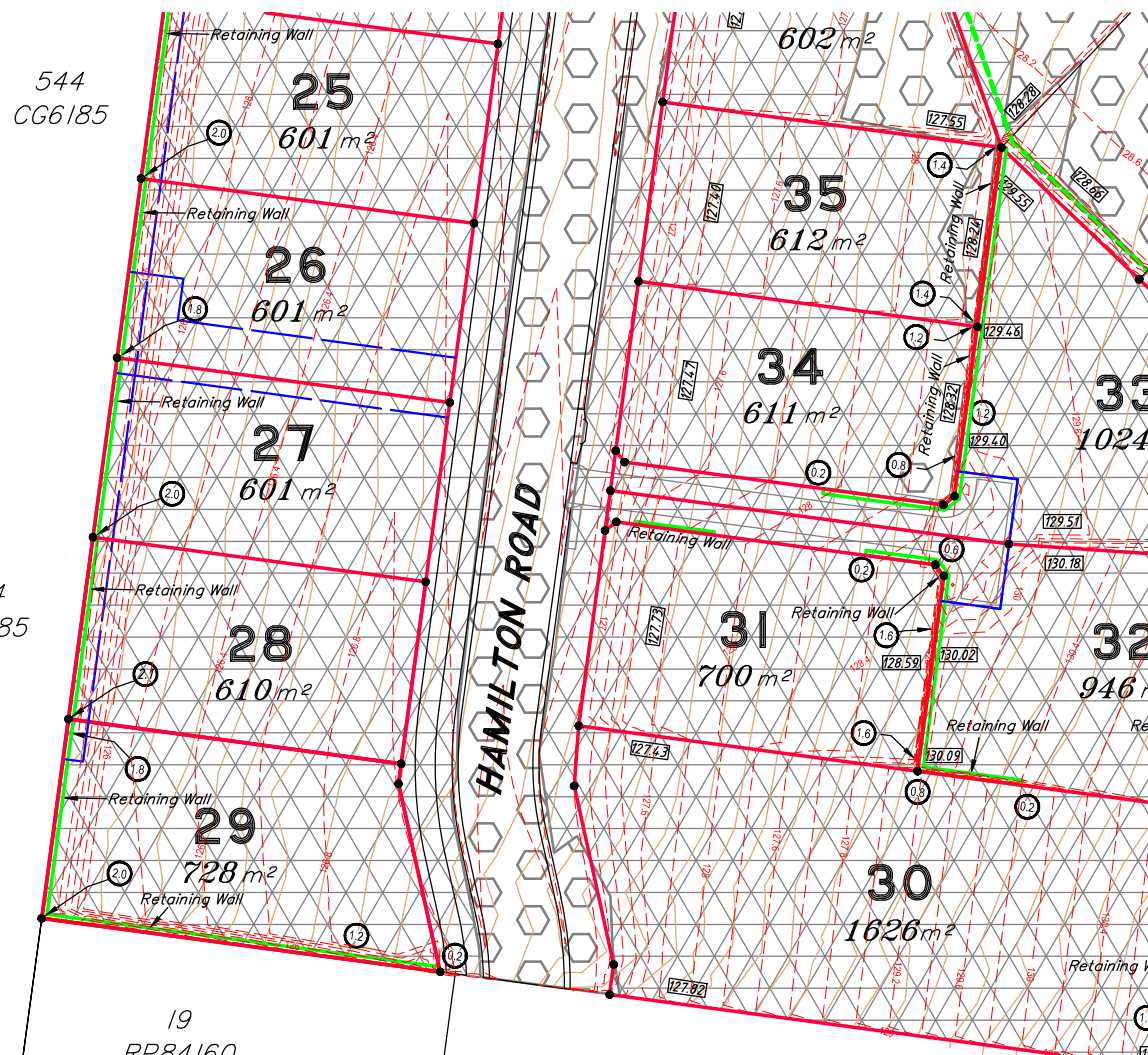
Suite 11C
Brightwater Corporate Centre
69 Attenuata Drive
MOUNTAIN CREEK QLD 4557
E: corey@skysurv.com.au
W: www.skysurv.com.au

PHONE
07 5493 4877

Plan No: 9867 Disclosure Stage 2	Scale: 1:500@A3
Prepared By: MN	Date: 27/09/21

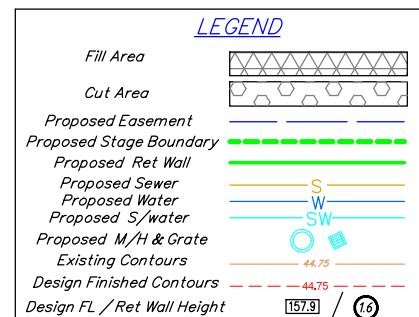
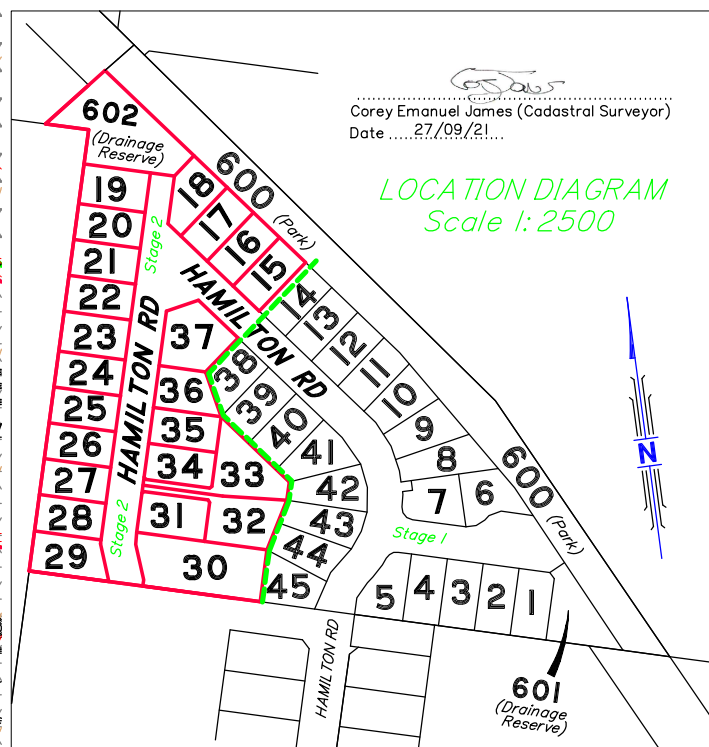
544
CG6185

544
CG6185



Corey Emanuel James (Cadastral Surveyor)
Date: 27/09/21

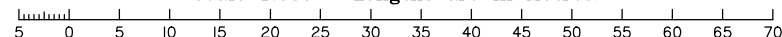
LOCATION DIAGRAM
Scale 1:2500



NOTES

- Approval Details – DA/34528/2017/V3RM Dated: 8 Sept 2017
- Final surface level information is as specified on Preliminary Operational Works drawings prepared by Walsh Consulting Engineers. All earthworks are to be carried out in accordance with AS3798–2007 guidelines on earthworks for commercial and residential developments. Supervision of bulk earthworks must be to Level 1 and the frequency of field density testing must be in accordance with Table 8.1 of AS 3798–2007.
- Levels shown are referenced to the Australian Height Datum (AHD)
- Levels, heights & depths shown hereon are approximate only and may vary from constructed values; values will not be deemed inaccurate for any variance up to +/- 0.5m
- This plan was prepared to satisfy s11 Land Sales Act 1984
- Builders shall not build off the design levels shown; a site survey is required.
- These notes are an integral part of this plan.

Scale 1:500 – Lengths are in Metres.



DISCLOSURE PLAN (Earthworks)

For Proposed Lots 15–37 & 602
to be shown on SP331084

(Currently Part of Lot 1 on RP215247)

Local Government: Moreton Bay R.C. Locality: Woodford

Plan No: 9867 Disclosure Stage 2

Scale: 1:500@A3

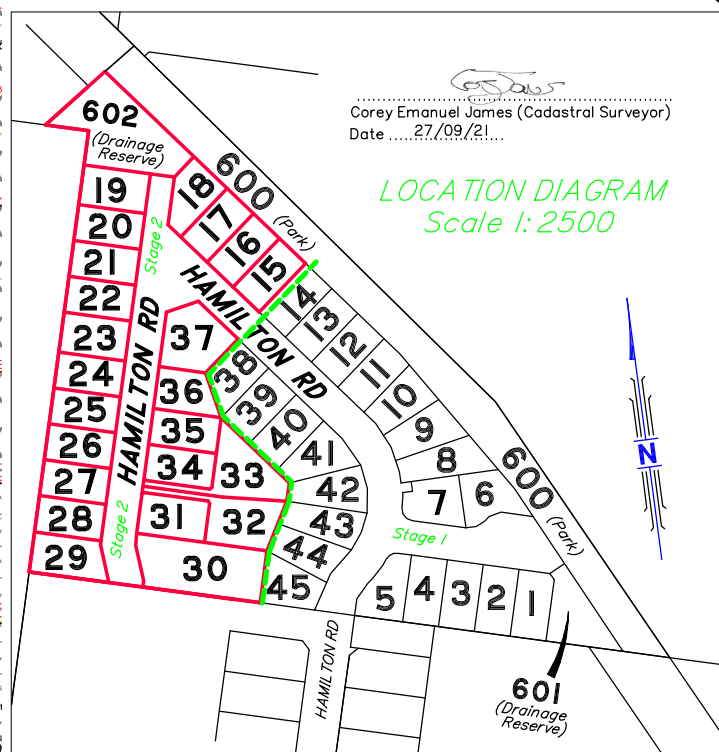
Prepared By: MN

Date: 27/09/21



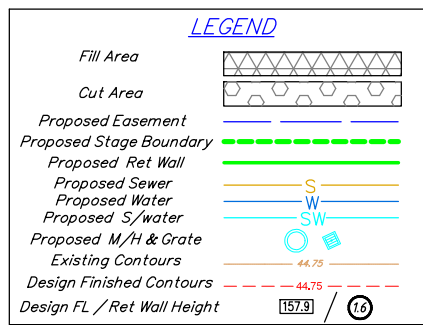
Suite 11C
Brightwater Corporate Centre
69 Attenuata Drive
MOUNTAIN CREEK QLD 4557
E: corey@skysurv.com.au
W: www.skysurv.com.au

PHONE
07 5493 4877



Corey Emanuel James (Cadastral Surveyor)
Date: 27/09/21

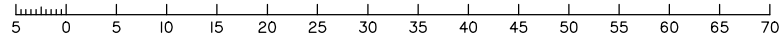
LOCATION DIAGRAM
Scale 1:2500



NOTES

- Approval Details – DA/34528/2017/V3RM Dated: 8 Sept 2017
- Final surface level information is as specified on Preliminary Operational Works drawings prepared by Walsh Consulting Engineers. All earthworks are to be carried out in accordance with AS3798–2007 guidelines on earthworks for commercial and residential developments. Supervision of bulk earthworks must be to Level 1 and the frequency of field density testing must be in accordance with Table 8.1 of AS 3798–2007.
- Levels shown are referenced to the Australian Height Datum (AHD)
- Levels, heights & depths shown hereon are approximate only and may vary from constructed values; values will not be deemed inaccurate for any variance up to +/- 0.5m
- This plan was prepared to satisfy s11 Land Sales Act 1984
- Builders shall not build off the design levels shown; a site survey is required.
- These notes are an integral part of this plan.

Scale 1:500 – Lengths are in Metres.



DISCLOSURE PLAN

(Earthworks)

For Proposed Lots 15–37 & 602
to be shown on SP331084

(Currently Part of Lot 1 on RP215247)

Local Government: Moreton Bay R.C. Locality: Woodford



Suite 11C
Brightwater Corporate Centre
69 Attenuata Drive
MOUNTAIN CREEK QLD 4557
E: corey@skysurv.com.au
W: www.skysurv.com.au

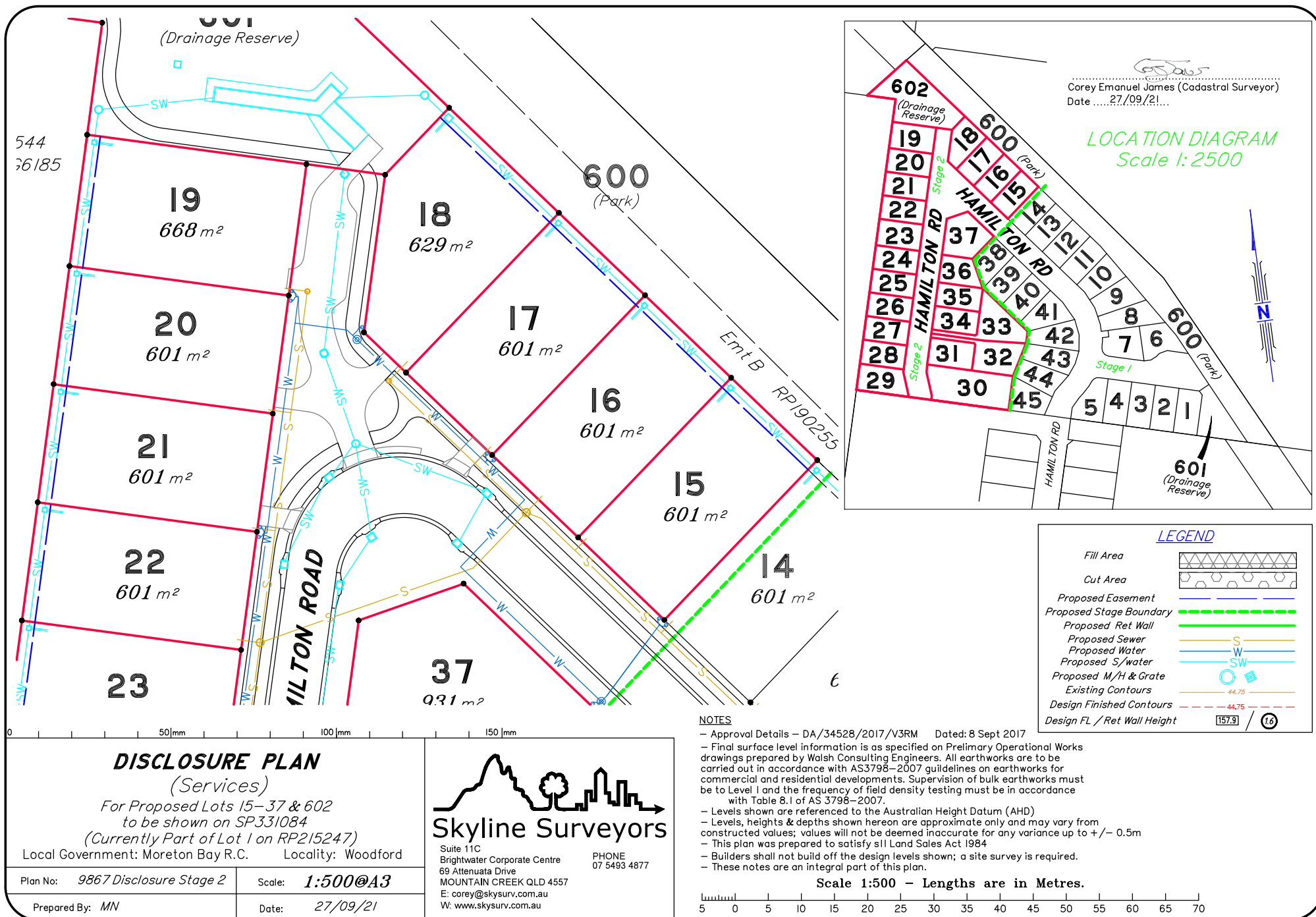
PHONE
07 5493 4877

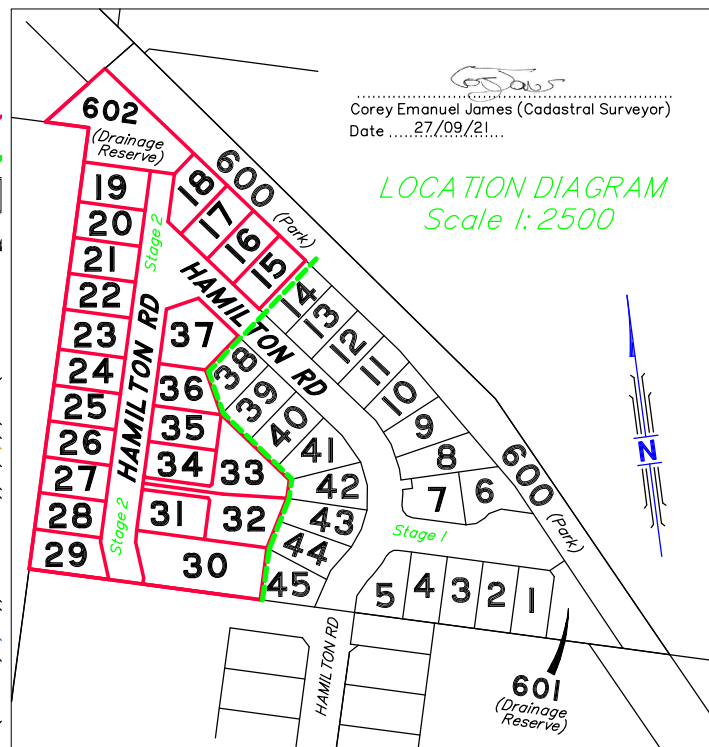
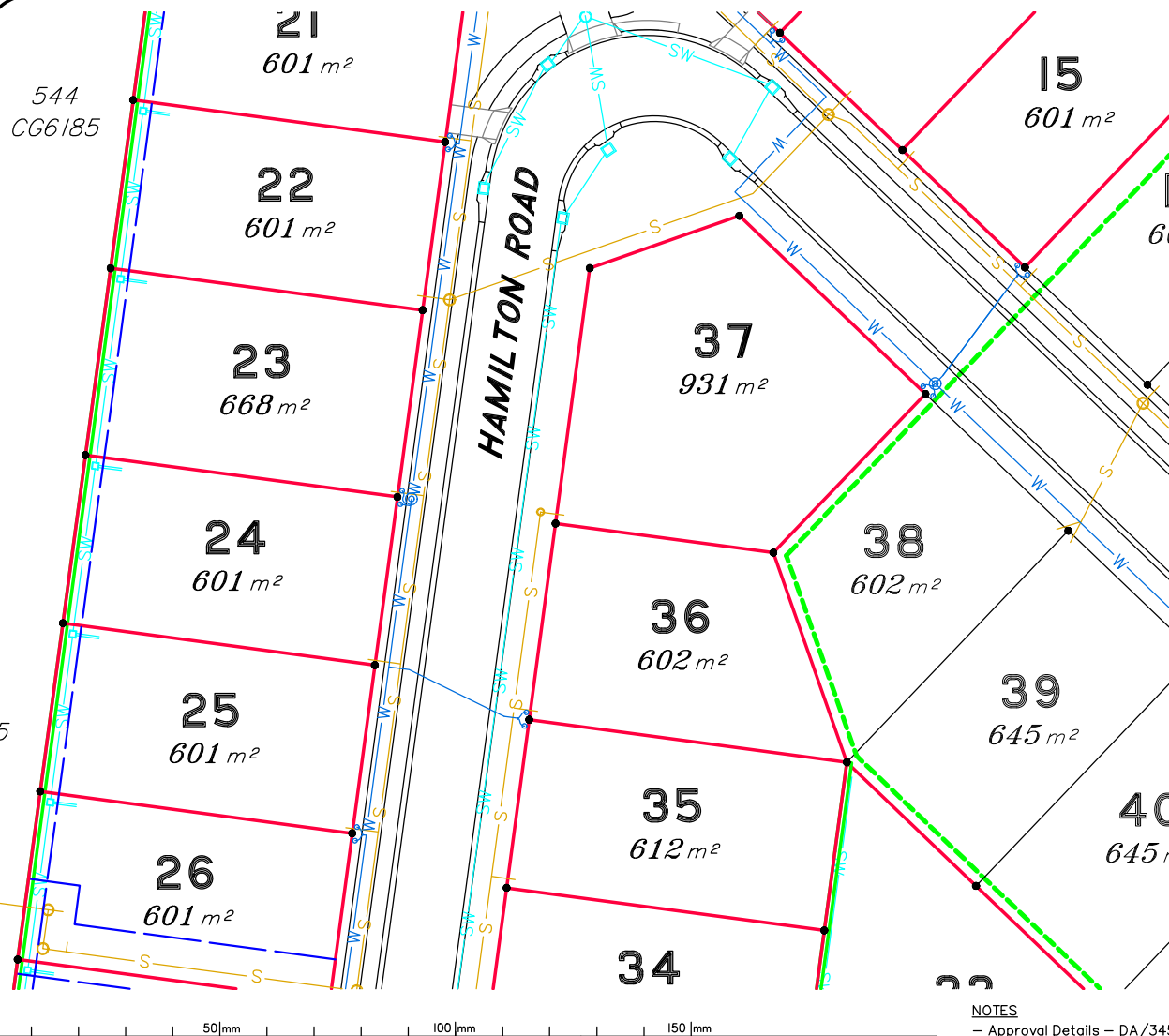
Plan No: 9867 Disclosure Stage 2

Scale: 1:500@A3

Prepared By: MN

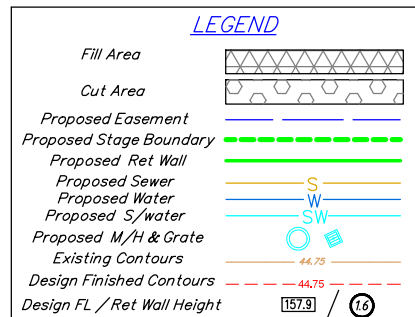
Date: 27/09/21





Corey Emanuel James (Cadastral Surveyor)
Date: 27/09/21

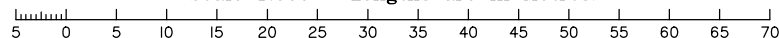
LOCATION DIAGRAM
Scale 1:2500



NOTES

- Approval Details – DA/34528/2017/V3RM Dated: 8 Sept 2017
- Final surface level information is as specified on Preliminary Operational Works drawings prepared by Walsh Consulting Engineers. All earthworks are to be carried out in accordance with AS3798–2007 guidelines on earthworks for commercial and residential developments. Supervision of bulk earthworks must be to Level 1 and the frequency of field density testing must be in accordance with Table 8.1 of AS 3798–2007.
- Levels shown are referenced to the Australian Height Datum (AHD)
- Levels, heights & depths shown hereon are approximate only and may vary from constructed values; values will not be deemed inaccurate for any variance up to +/- 0.5m
- This plan was prepared to satisfy s11 Land Sales Act 1984
- Builders shall not build off the design levels shown; a site survey is required.
- These notes are an integral part of this plan.

Scale 1:500 – Lengths are in Metres.



DISCLOSURE PLAN (Services)

For Proposed Lots 15–37 & 602
to be shown on SP331084

(Currently Part of Lot 1 on RP215247)

Local Government: Moreton Bay R.C. Locality: Woodford



Suite 11C
Brightwater Corporate Centre
69 Attenuata Drive
MOUNTAIN CREEK QLD 4557
E: corey@skysurv.com.au
W: www.skysurv.com.au

PHONE
07 5493 4877

Plan No: 9867 Disclosure Stage 2

Scale: 1:500@A3

Prepared By: MN

Date: 27/09/21

544
CG6185

25
601 m²

26
601 m²

27
601 m²

28
610 m²

29
728 m²

19
RP84160

602 m²

35
612 m²

34
611 m²

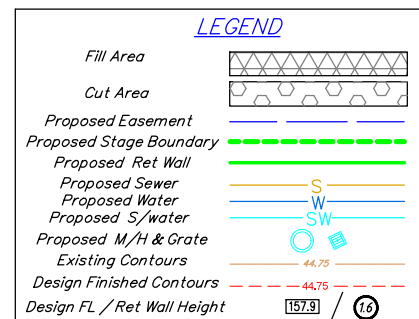
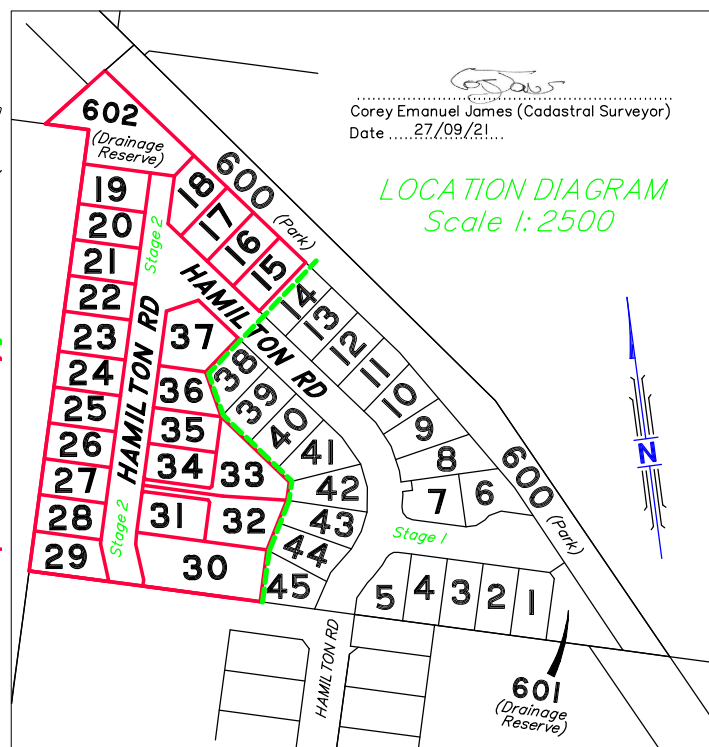
31
700 m²

30
1626 m²

39
645 m

33
1024 m²

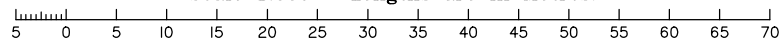
32
946 m²



NOTES

- Approval Details – DA/34528/2017/V3RM Dated: 8 Sept 2017
- Final surface level information is as specified on Preliminary Operational Works drawings prepared by Walsh Consulting Engineers. All earthworks are to be carried out in accordance with AS3798–2007 guidelines on earthworks for commercial and residential developments. Supervision of bulk earthworks must be to Level 1 and the frequency of field density testing must be in accordance with Table 8.1 of AS 3798–2007.
- Levels shown are referenced to the Australian Height Datum (AHD)
- Levels, heights & depths shown hereon are approximate only and may vary from constructed values; values will not be deemed inaccurate for any variance up to +/- 0.5m
- This plan was prepared to satisfy s11 Land Sales Act 1984
- Builders shall not build off the design levels shown; a site survey is required.
- These notes are an integral part of this plan.

Scale 1:500 – Lengths are in Metres.



DISCLOSURE PLAN (Services)

For Proposed Lots 15–37 & 602
to be shown on SP331084

(Currently Part of Lot 1 on RP215247)

Local Government: Moreton Bay R.C. Locality: Woodford

Plan No: 9867 Disclosure Stage 2

Scale: 1:500@A3

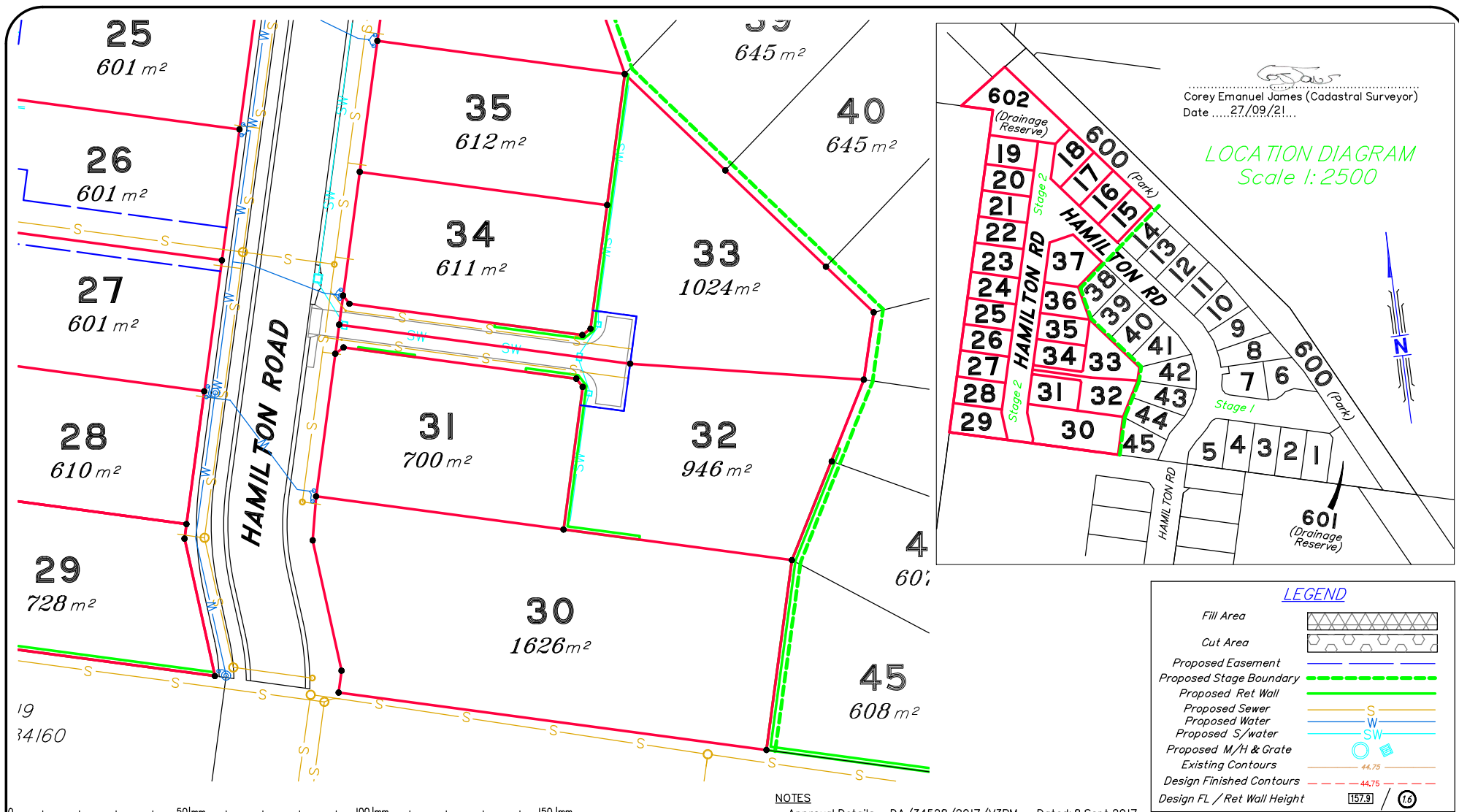
Prepared By: MN

Date: 27/09/21



Suite 11C
Brightwater Corporate Centre
69 Attenuata Drive
MOUNTAIN CREEK QLD 4557
E: corey@skysurv.com.au
W: www.skysurv.com.au

PHONE
07 5493 4877



DISCLOSURE PLAN (Services)

For Proposed Lots 15–37 & 602
to be shown on SP331084

(Currently Part of Lot 1 on RP215247)

Local Government: Moreton Bay R.C. Locality: Woodford

Plan No: 9867 Disclosure Stage 2

Scale: 1:500@A3

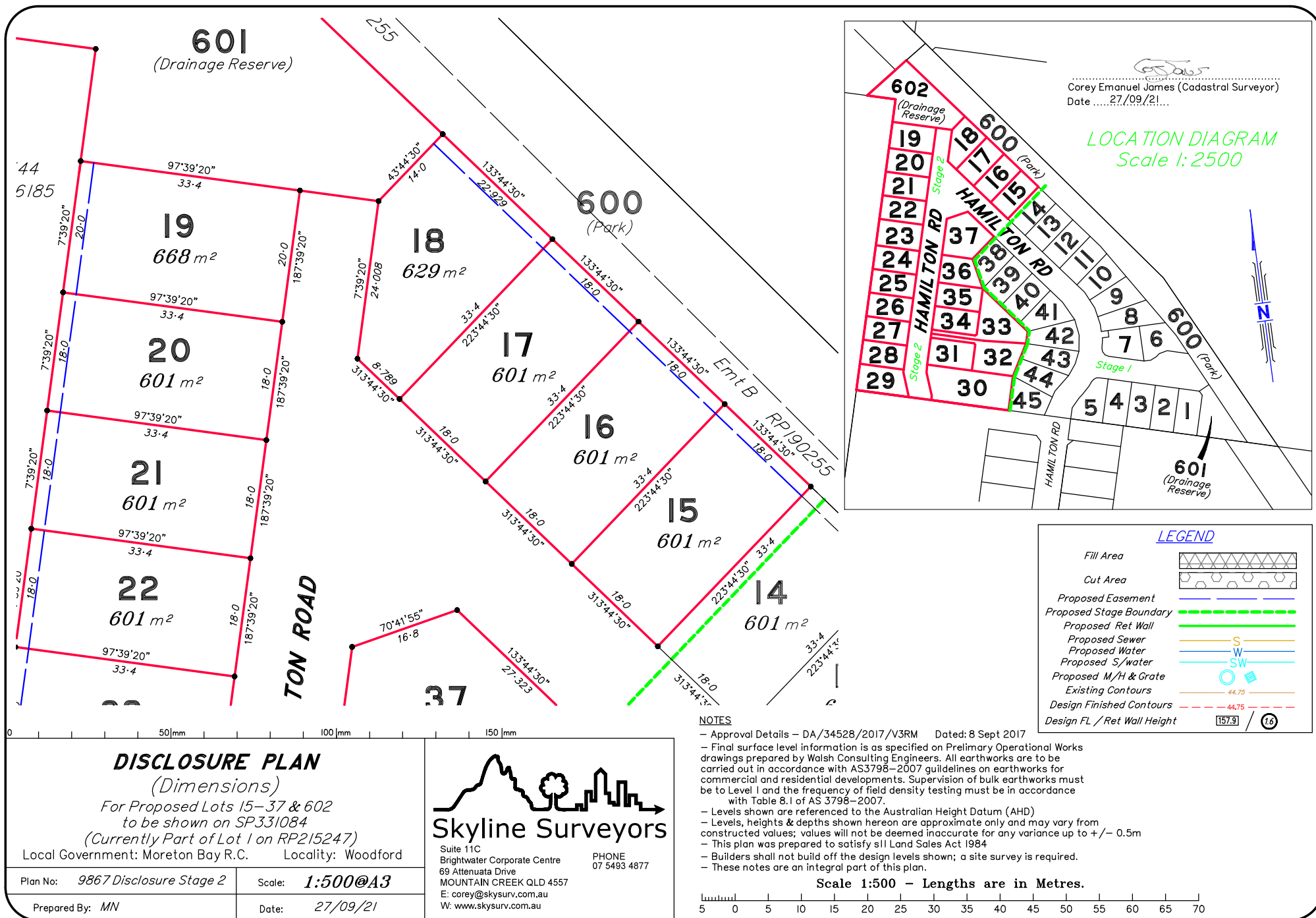
Prepared By: MN

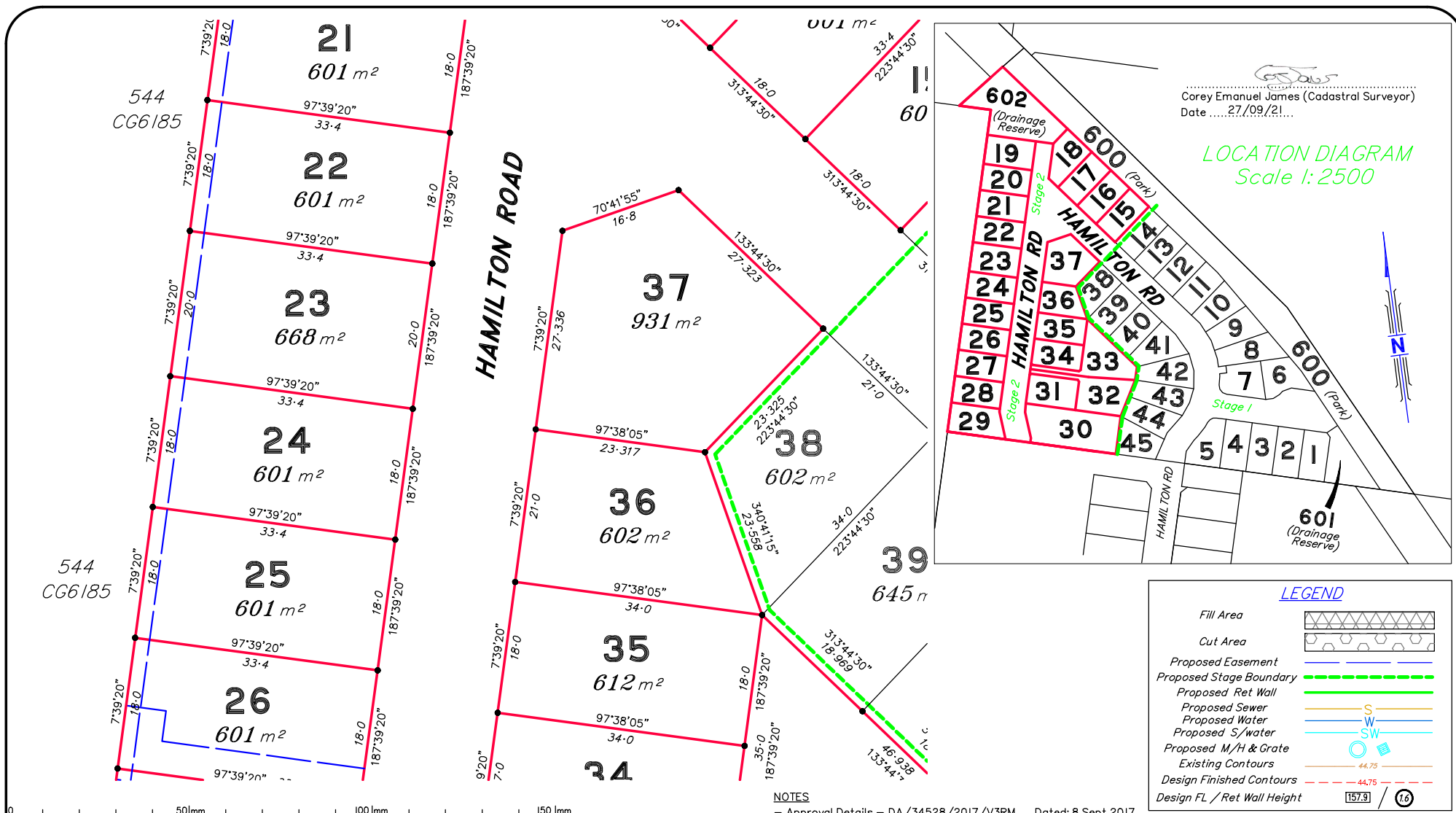
Date: 27/09/21



Suite 11C
Brightwater Corporate Centre
69 Attenuata Drive
MOUNTAIN CREEK QLD 4557
E: corey@skysurv.com.au
W: www.skysurv.com.au

PHONE
07 5493 4877





DISCLOSURE PLAN

(Dimensions)

For Proposed Lots 15–37 & 602
to be shown on SP331084

(Currently Part of Lot 1 on RP215247)

Local Government: Moreton Bay R.C. Locality: Woodford

Plan No: 9867 Disclosure Stage 2

Scale: 1:500@A3

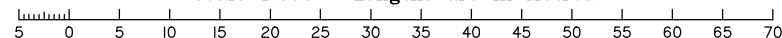
Prepared By: MN

Date: 27/09/21



Suite 11C
Brightwater Corporate Centre
69 Attenuata Drive
MOUNTAIN CREEK QLD 4557
E: corey@skysurv.com.au
W: www.skysurv.com.au

PHONE
07 5493 4877



544
CG6185

25

601 m²

26

601 m²

27

601 m²

28

610 m²

29

728 m²

19

RP84160

602 m²

35

612 m²

34

611 m²

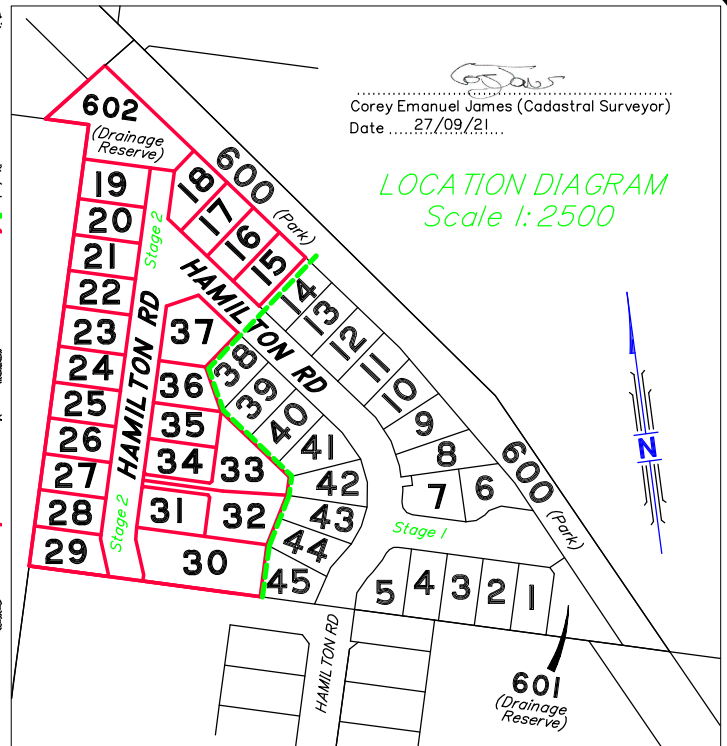
31

700 m²

30

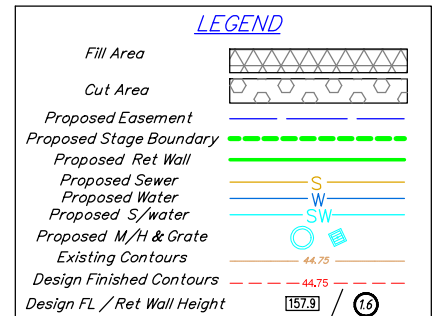
1626 m²

HAMILTON ROAD



Corey Emanuel James (Cadastral Surveyor)
Date: 27/09/21

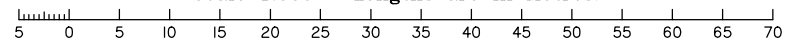
LOCATION DIAGRAM
Scale 1:2500



NOTES

- Approval Details – DA/34528/2017/V3RM Dated: 8 Sept 2017
- Final surface level information is as specified on Preliminary Operational Works drawings prepared by Walsh Consulting Engineers. All earthworks are to be carried out in accordance with AS3798–2007 guidelines on earthworks for commercial and residential developments. Supervision of bulk earthworks must be to Level 1 and the frequency of field density testing must be in accordance with Table 8.1 of AS 3798–2007.
- Levels shown are referenced to the Australian Height Datum (AHD)
- Levels, heights & depths shown hereon are approximate only and may vary from constructed values; values will not be deemed inaccurate for any variance up to +/- 0.5m
- This plan was prepared to satisfy s11 Land Sales Act 1984
- Builders shall not build off the design levels shown; a site survey is required.
- These notes are an integral part of this plan.

Scale 1:500 – Lengths are in Metres.



DISCLOSURE PLAN

(Dimensions)

For Proposed Lots 15–37 & 602
to be shown on SP331084

(Currently Part of Lot 1 on RP215247)

Local Government: Moreton Bay R.C. Locality: Woodford

Plan No: 9867 Disclosure Stage 2

Scale: 1:500@A3

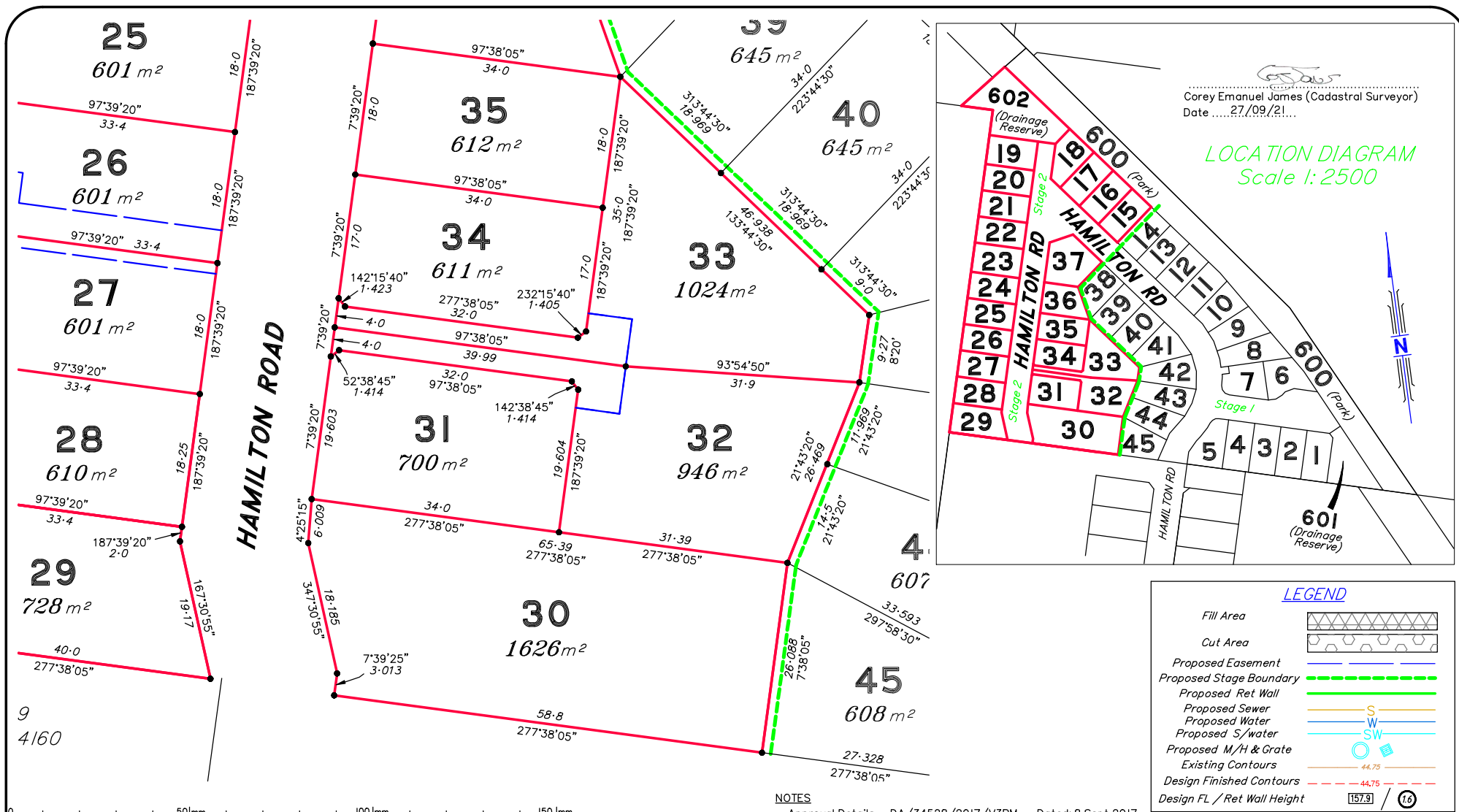
Prepared By: MN

Date: 27/09/21



Suite 11C
Brightwater Corporate Centre
69 Attenuata Drive
MOUNTAIN CREEK QLD 4557
E: corey@skysurv.com.au
W: www.skysurv.com.au

PHONE
07 5493 4877



DISCLOSURE PLAN
(Dimensions)
For Proposed Lots 15–37 & 602
to be shown on SP331084
(Currently Part of Lot 1 on RP215247)
Local Government: Moreton Bay R.C. Locality: Woodford

Plan No: 9867 Disclosure Stage 2 Scale: 1:500@A3

Prepared By: MN Date: 27/09/21

Skyline Surveyors
Suite 11C
Brightwater Corporate Centre
69 Attenuata Drive
MOUNTAIN CREEK QLD 4557
E: corey@skysurv.com.au
W: www.skysurv.com.au
PHONE 07 5493 4877

NOTES

- Approval Details – DA/34528/2017/V3RM Dated: 8 Sept 2017
- Final surface level information is as specified on Preliminary Operational Works drawings prepared by Walsh Consulting Engineers. All earthworks are to be carried out in accordance with AS3798–2007 guidelines on earthworks for commercial and residential developments. Supervision of bulk earthworks must be to Level 1 and the frequency of field density testing must be in accordance with Table 8.1 of AS 3798–2007.
- Levels shown are referenced to the Australian Height Datum (AHD)
- Levels, heights & depths shown hereon are approximate only and may vary from constructed values; values will not be deemed inaccurate for any variance up to +/- 0.5m
- This plan was prepared to satisfy s11 Land Sales Act 1984
- Builders shall not build off the design levels shown; a site survey is required.
- These notes are an integral part of this plan.

Scale 1:500 – Lengths are in Metres.

