

Property Details

31 Wattletree Drive, Mount Helen, Vic 3350

Lot/Plan Number: 16/LP204013
Area: 1056
Planning Zone Number: 400
Overlay(s):

Municipality: BALLARAT
Perimeter: 140
Planning Scheme Zone: ZN
Planning Zone: GENERAL RESIDENTIAL ZONE -
SCHEDULE 1 (GRZ1)



Account - Biggin & Scott | P: 03 5331 3911

Biggin & Scott



Sold
Comparables

[← Back to results](#) Sold > VIC > Mount Helen > House > 4 Redwood Court



4 Redwood Court, Mount Helen, Vic 3350



🛏 4 🚗 2 🚗 2 📏 787 m² House

\$525,000

Sold on 03 Mar 2021

[🕒 Property History](#)

Looking to buy a place like this?

[📊 Estimate repayments](#)

Looking to sell a similar property?

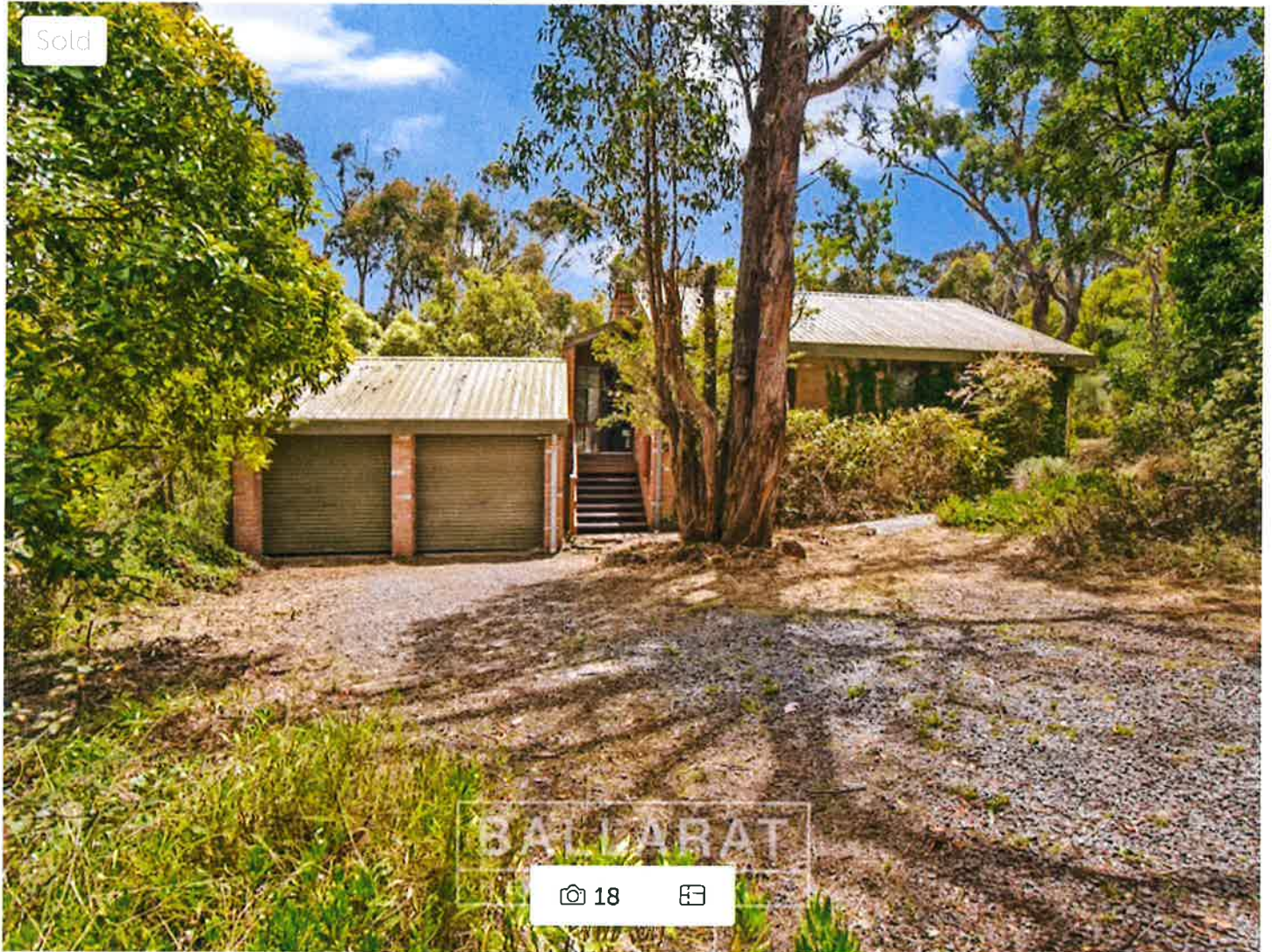
[See how the selling agents can help you](#) [🔗](#)

[← Back to results](#) Sold > VIC > Mount Helen > House > 122 Moss Avenue

BALLARAT

REAL ESTATE

Sold



122 Moss Avenue, Mount Helen, Vic 3350



🚗 4 🚗 2 🚗 2 🏠 3,960 m² House

\$531,500

Sold on 05 Feb 2021

[🕒 Property History](#)

Looking to buy a place like this?

[📊 Estimate repayments](#)

Looking to sell a similar property?

[See how the selling agents can help you](#) [🔗](#)

[← Back to results](#) Sold > VIC > Mount Helen > House > 3 Viola Court

buxton



3 Viola Court, Mount Helen, Vic 3350



🛏 4 🚗 2 🚗 2 📏 870 m² House

\$550,000

Sold on 15 Dec 2020

[🕒 Property History](#)

Looking to buy a place like this?

[📊 Estimate repayments](#)

Looking to sell a similar property?

[See how the selling agents can help you](#) 

[← Back to results](#) Sold > VIC > Mount Helen > House > 9 Darriwell Drive

Doepel Lilley+Taylor

Real Estate Since 1868

Sold



14 photos

9 Darriwell Drive, Mount Helen, Vic 3350



5 beds 2 baths 2 car 1,641 m² House

\$570,000

Sold on 21 Dec 2020

[Property History](#)

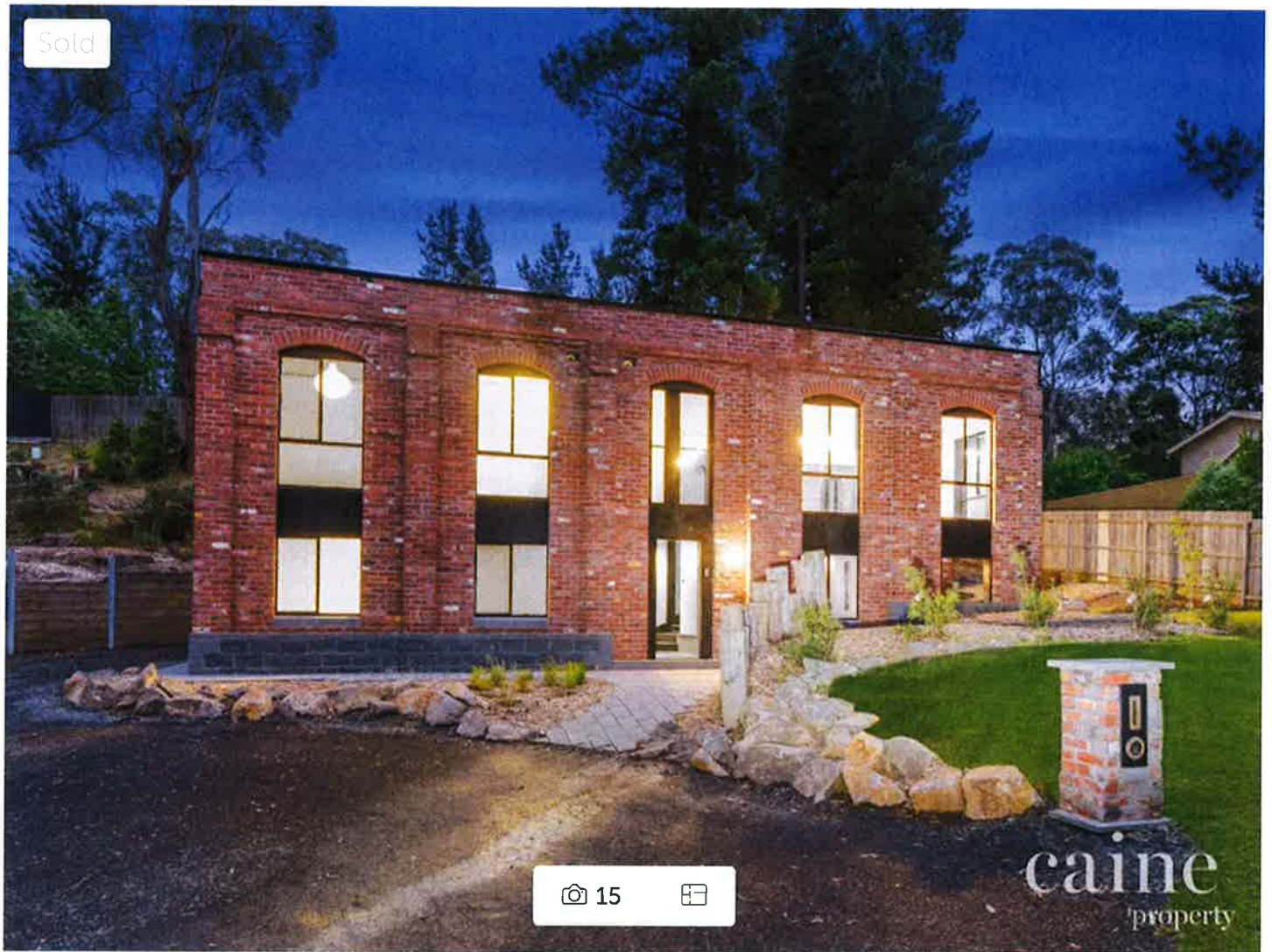
Looking to buy a place like this?

[Estimate repayments](#)

Looking to sell a similar property?

[See how the selling agents can help you](#)

[← Back to results](#) Sold > VIC > Mount Helen > 8 Darriwell Drive



8 Darriwell Drive, Mount Helen, Vic 3350



 1,115 m² Residential Land

\$575,000

Sold on 01 Dec 2020

Property History

Looking to buy a place like this?

 [Estimate repayments](#)

Looking to sell a similar property?

[See how the selling agents can help you](#) 

[← Back to results](#) Sold > VIC > Mount Helen > House > 1 Redwood Court

JellisCraig

Sold



 14 

1 Redwood Court, Mount Helen, Vic 3350




 4  2  4 House

\$585,000

Sold on 30 Nov 2020

[🕒 Property History](#)

Looking to buy a place like this?

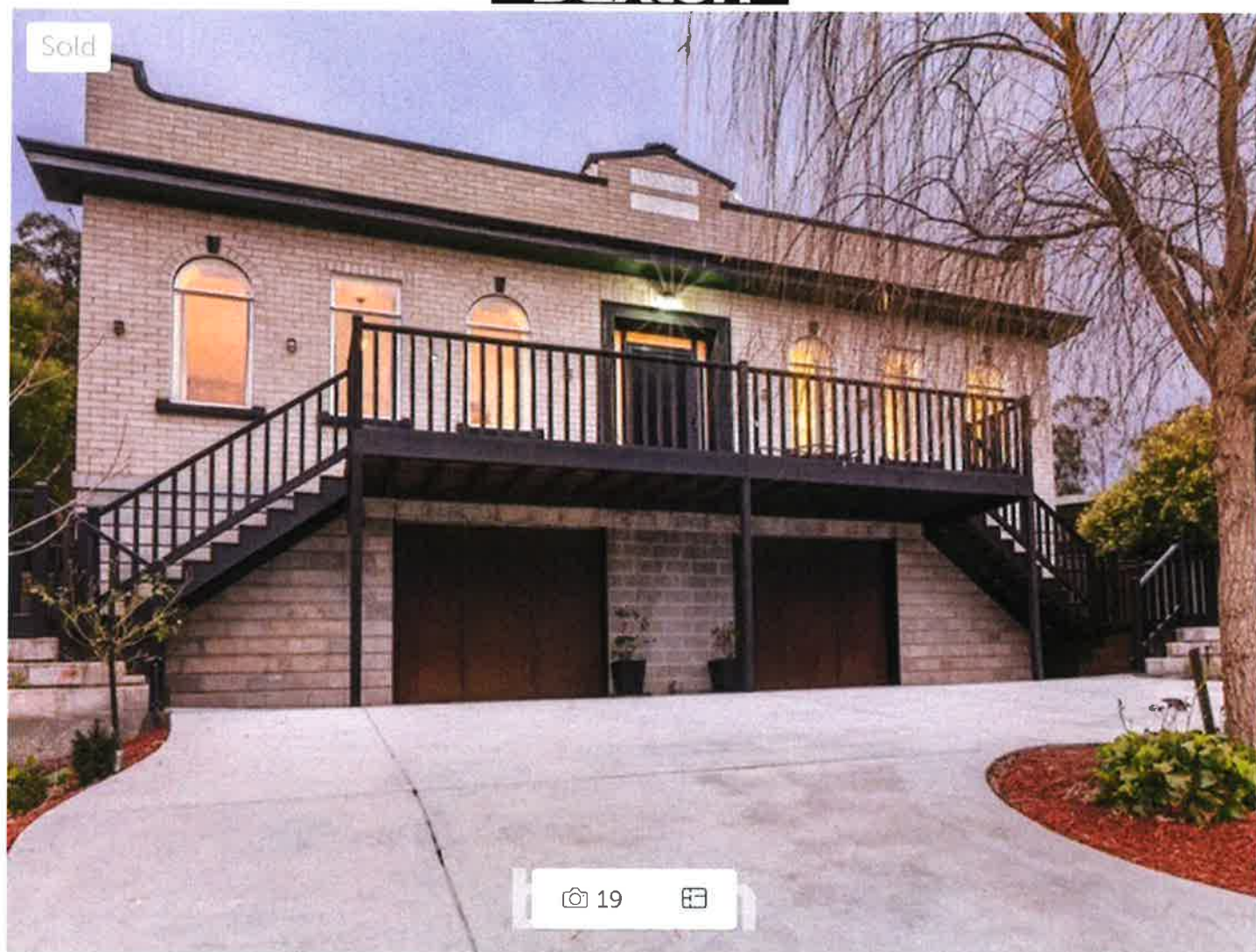
 [Estimate repayments](#)

Looking to sell a similar property?

[See how the selling agents can help you](#) 

[← Back to results](#) Sold > VIC > Mount Helen > House > 107 Boak Avenue

buxton



107 Boak Avenue, Mount Helen, Vic 3350




 4  2  2  864 m² House

\$588,000

Sold on 25 Aug 2020

[🕒 Property History](#)

Looking to buy a place like this?

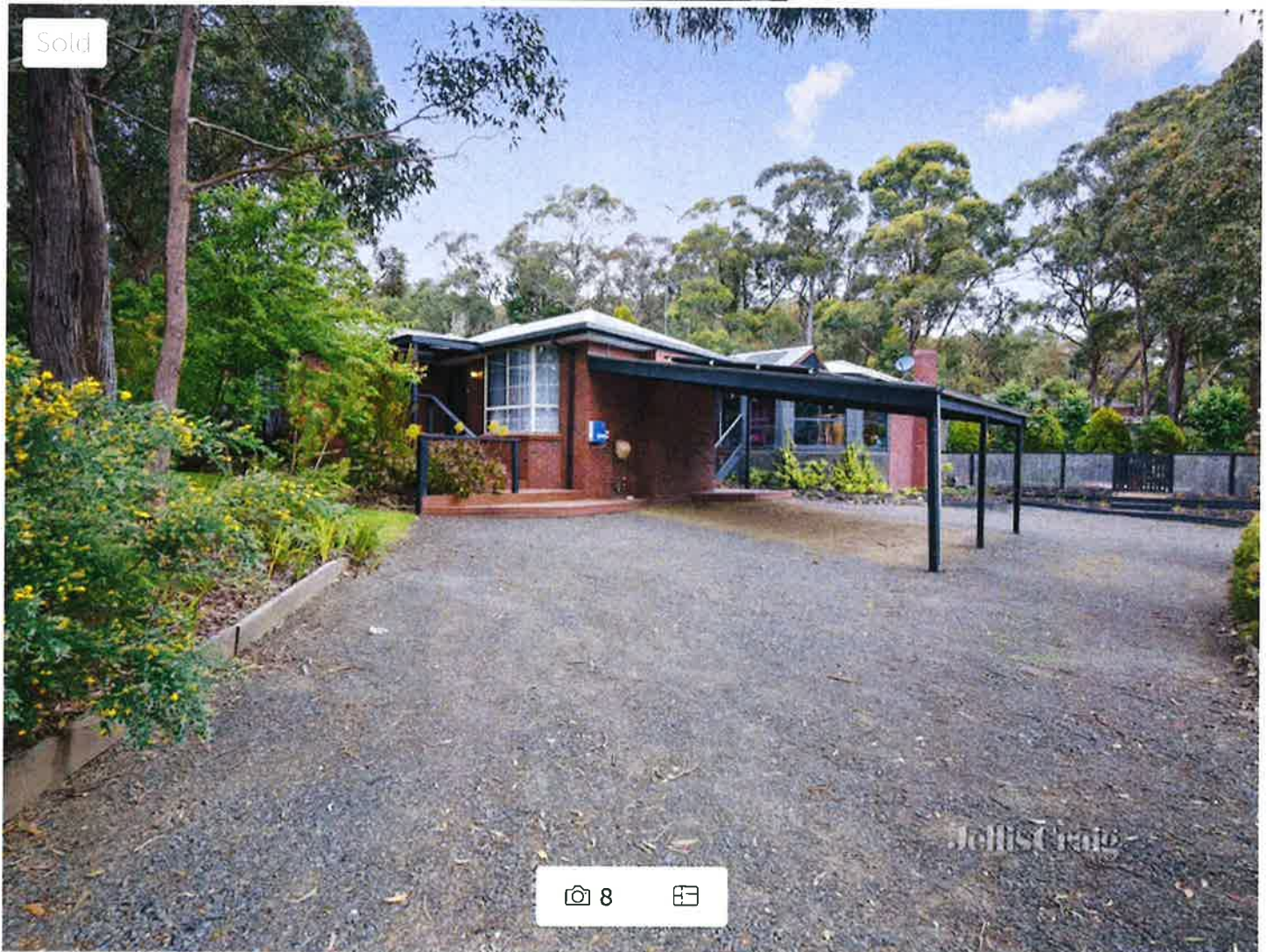
 [Estimate repayments](#)

Looking to sell a similar property?

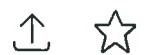
[See how the selling agents can help you](#) 

[← Back to results](#) Sold > VIC > Mount Helen > House > 16 Timbertop Drive

JellisCraig



16 Timbertop Drive, Mount Helen, Vic 3350



🛏 4 🚗 2 🚗 4 📏 1,760 m² House

\$605,000

Sold on 05 Dec 2020

[🕒 Property History](#)

Looking to buy a place like this?

[📊 Estimate repayments](#)

Looking to sell a similar property?

[See how the selling agents can help you](#) [🔗](#)

[← Back to results](#) Sold > VIC > Mount Helen > House > 7 Eilish Court

buxton

Sold



35



7 Eilish Court, Mount Helen, Vic 3350



4 2 2 819 m² House

\$710,000

Sold on 28 Jan 2021

🕒 Property History

Looking to buy a place like this?

 [Estimate repayments](#)

Looking to sell a similar property?

[See how the selling agents can help you](#) 