
whitford

COMPARABLE SALES REPORT

Prepared on 20 June 2017



4 Parkland Court Highton VIC 3216



Tony Young
Whitford Newtown
357 Pakington Street
NEWTOWN VIC 3220
m: 0417811762
w: 03 5222 1616
tony@whitfordproperty.com.au

whitford

YOUR PROPERTY

4 Parkland Court Highton VIC 3216

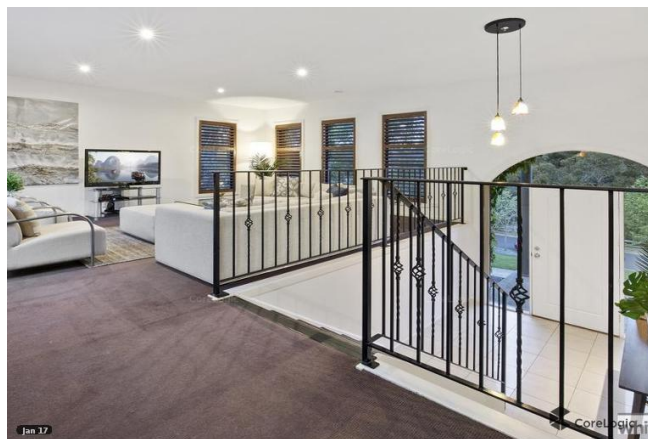
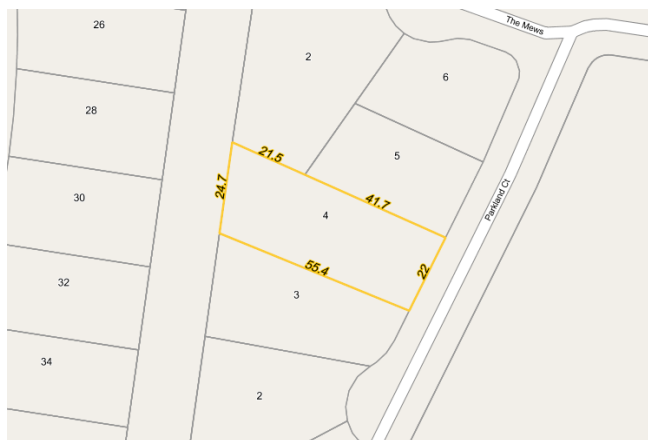
LAND 1,359m²

FLOOR 313m²

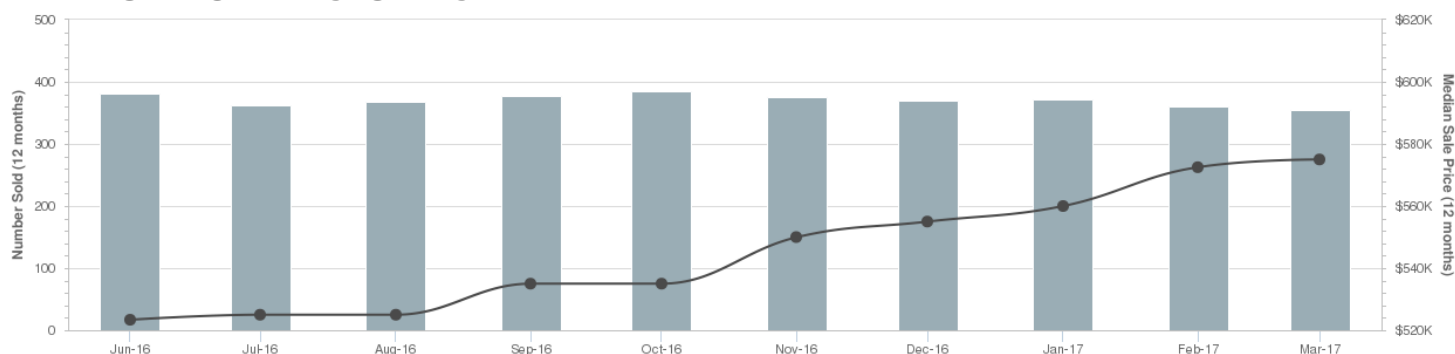
5

2

2



HIGHTON INSIGHTS



whitford

COMPARABLE SALES



15-17 Vanessa Avenue Highton VIC 3216

Sold Price **\$950,000^{RS}**

5 2 2 2,042m² 327m²

Sold Date	17-Sep-16	Price Change	▼ 26.4%	Year Built	1972
DOM	283 days	First Listing	\$1,290,000		
Distance	0.6km	Last Listing	-		



15 Keram Crescent Highton VIC 3216

Sold Price **\$924,500^{RS}**

5 2 2 1,014m² 388m²

Sold Date	10-Sep-16	Price Change	-	Year Built	1980
DOM	27 days	First Listing	-		
Distance	0.95km	Last Listing	-		



9 Giverny Close Highton VIC 3216

Sold Price **\$950,000^{RS}**

4 3 3 1,036m² -

Sold Date	30-Nov-16	Price Change	▼ 2.6%	Year Built	-
DOM	15 days	First Listing	\$975,000		
Distance	1.77km	Last Listing	\$1,050,000		

DOM = Days on market

RS = Recent sale



DISCLAIMER

The State of Victoria owns the copyright in the Property Sales Data and reproduction of that data in any way without the consent of the State of Victoria will constitute a breach of the Copyright Act 1968 (Cth). The State of Victoria does not warrant the accuracy or completeness of the Property Sales Data and any person using or relying upon such information does so on the basis that the State of Victoria accepts no responsibility or liability whatsoever for any errors, faults, defects or omissions in the information supplied.

The Appraisal Amount contained in the report may have been manually provided by the Agent; or may be based on an automated valuation model estimate provided by CoreLogic ('AVM Estimated Value'). AVM Estimated Values are current at the date of the publication only. It is computer generated and is not a professional appraisal of the subject property and should not be relied upon in lieu of appropriate professional advice. The accuracy of the methodology used to develop the AVM Estimated Value, the existence of the subject property, and the accuracy of the AVM Estimated Value and all rule sets provided are estimates based on available data and are not guaranteed or warranted. CoreLogic excludes all liability for any loss or damage arising in connection with the Appraisal Amount and/or AVM Estimated Value.

Whilst all reasonable effort is made to ensure the information in this publication is current, CoreLogic does not warrant the accuracy or completeness of the data and information contained in this publication and to the full extent not prohibited by law excludes all for any loss or damage arising in connection with the data and information contained in this publication.