

HOUSE Offered for Sale

20 Gordon Drive Kialla VIC 3631

 3  2  2

Indicative Selling Price

For the meaning of this price see consumer.vic.gov.au/underquoting

Single Price \$322,500

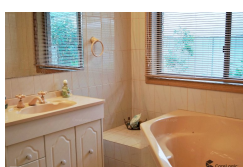
Median Sale Price



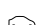
\$415,000 Houses in Kialla between 01 Jul 2018 - 30 Jun 2019

Source: CoreLogic




Comparable Property Sales




These are the three properties sold within five kilometres of the property for sale in the last 18 months that the estate agent or agent's representative considers to be most comparable to the property for sale.



1 Illawarra Crescent Kialla VIC 3631	Sold Price	\$323,000	Sold Date	19-Dec-17
 3  2 			Distance	0.64km



23 Illawarra Crescent Kialla VIC 3631	Sold Price	\$317,500	Sold Date	10-Jan-18
 3  2 			Distance	0.8km

1 Mulwala Court Kialla VIC 3631	Sold Price	\$340,000	Sold Date	28-Mar-19
 3  2 			Distance	0.94km

RS = Recent sale UN = Undisclosed Sale

DISCLAIMER Whilst all reasonable effort is made to ensure the information in this publication is current, CoreLogic does not warrant the accuracy or completeness of the data and information contained in this publication and to the full extent not prohibited by law excludes all for any loss or damage arising in connection with the data and information contained in this publication.

The State of Victoria owns the copyright in the Property Sales Data and reproduction of that data in any way without the consent of the State of Victoria will constitute a breach of the Copyright Act 1968 (Cth). The State of Victoria does not warrant the accuracy or completeness of the Property Sales Data and any person using or relying upon such information does so on the basis that the State of Victoria accepts no responsibility or liability whatsoever for any errors, faults, defects or omissions in the information supplied.