

1860 Mount Samson Road, Yugar

BESPOKE CRAFTSMANSHIP ON 5 ACRES OF PARK-LIKE LAND



Contact Agent



4 bed



2 bath



2 car



5 acres



THE HOME

- High set brick & timber home built by esteemed local builder Gilly Seccato in 1982
- Soaring cathedral ceilings & the rich warmth of cypress hardwood panelling, artfully complemented by slate and stone accents
- Renovated kitchen featuring stone bench tops, ample storage & quality appliances
- Open plan dining and lounge space leading to multiple covered outdoor entertainment areas
- Separate lounge and study featuring a wood burning slow combustion fireplace
- Rumpus room featuring direct access to the outdoors
- Master bedroom featuring tranquil rural views & a blank canvas with the potential to create an ensuite to suit you
- Additional 3 light filled bedrooms, two featuring built in robes
- Original family bathroom upstairs + additional full bathroom downstairs
- Ceiling fans throughout
- New carpet throughout upstairs
- Laundry featuring external access
- Large store room or perhaps convert to a wine cellar



CRAIG DOYLE
REAL ESTATE











THE LAND

- 5 acres of cleared usable land
- Low maintenance landscaping surrounding the home, serviced by irrigation from the dam
- Huge, healthy dam providing a constant water source
- Mixture of flat & undulating land - all usable - so much potential!

THE INFRASTRUCTURE

- Mixture of flat & undulating land - all usable - so much potential!
- Pump & underground irrigation from the dam supplying water all around the property
- NBN fixed wireless internet
- Water tanks
- On-site waste treatment system



CRAIG DOYLE
REAL ESTATE



THE LOCATION & ADDITIONAL INFO

- Surrounded by a community of friendly neighbours
- School bus will stop at the gate providing transport to Samford State School & Samford Village with connections to Samford Valley Steiner School, Ferny Grove State High School & many excellent private schools
- 5 mins to Samford Village with its wealth of quality shops, cafes & dining options
- 10 mins to Ferny Grove Train & the soon to be completed entertainment precinct
- 40 mins to Brisbane CBD & Brisbane Airport - or catch the train from Ferny Grove for a super easy commute
- Moreton Bay Regional Council

**'In Real Estate,
Always At Your Service'**

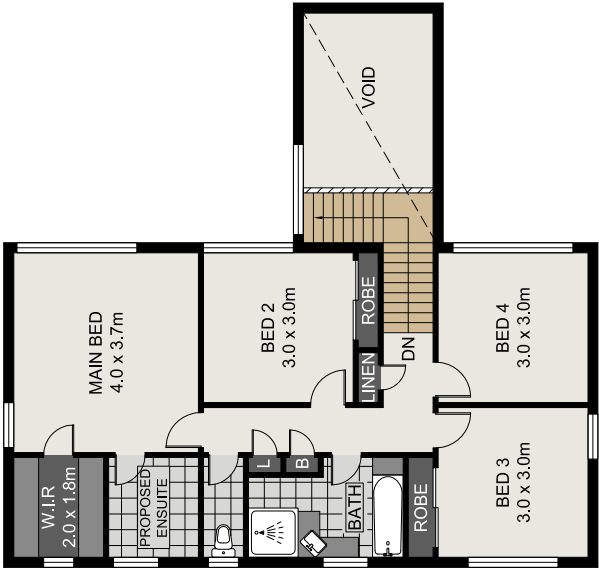
Chelsea Perry



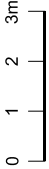
0415 901 389 | chelsea@craigdoyle.com.au



LOWER LEVEL

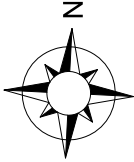


UPPER LEVEL



Scale in metres, indicative only. Dimensions are approximate. All information contained herein is gathered from sources we believe to be reliable. However, we cannot guarantee its accuracy and interested persons should rely on their own enquiries.

1860 Mount Samson Road, Yugar



INT	:	223.50m ²
EXT	:	162.33m ²
CARPORT	:	60.76m ²
TOTAL	:	446.59m ²

