

HOUSE Offered for Sale

150 Lowndes Road Bannockburn VIC 3331

 4  2  2

Indicative Selling Price

For the meaning of this price see consumer.vic.gov.au/underquoting

Range between \$695,000 & \$745,000

Median Sale Price

\$505,000 Houses in Bannockburn between 01 Sep 2018 - 31 Aug 2019

Source: CoreLogic

Comparable Property Sales

These are the three properties sold within five kilometres of the property for sale in the last 18 months that the estate agent or agent's representative considers to be most comparable to the property for sale.



19 The Grange Bannockburn VIC 3331

 4  2  4

Sold Price

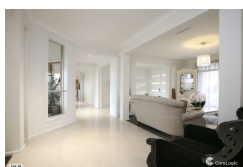
\$785,000

Sold Date

09-Mar-19

Distance

2.73km



27 Munro Mews Bannockburn VIC 3331

 4  2  2

Sold Price

\$780,000

Sold Date

12-Jun-18

Distance

1.19km



22 Doherty Street Bannockburn VIC 3331

 4  2  2

Sold Price

\$765,000

Sold Date

06-Nov-17

Distance

3km

RS = Recent sale

UN = Undisclosed Sale

DISCLAIMER Whilst all reasonable effort is made to ensure the information in this publication is current, CoreLogic does not warrant the accuracy or completeness of the data and information contained in this publication and to the full extent not prohibited by law excludes all for any loss or damage arising in connection with the data and information contained in this publication.

The State of Victoria owns the copyright in the Property Sales Data and reproduction of that data in any way without the consent of the State of Victoria will constitute a breach of the Copyright Act 1968 (Cth). The State of Victoria does not warrant the accuracy or completeness of the Property Sales Data and any person using or relying upon such information does so on the basis that the State of Victoria accepts no responsibility or liability whatsoever for any errors, faults, defects or omissions in the information supplied.