

Land Offered for Sale

34 Castlemaine Drive Eynesbury VIC 3338

 0
  0
  0
Indicative Selling Price

\$619,000 — \$659,000

Median Sale Price of Land in Eynesbury between Feb 2016 - Jan 2017

\$200,000 (Source: CoreLogic)

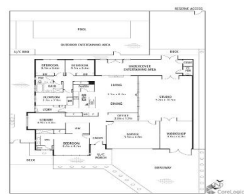
Comparable Sales

These are the 3 properties sold within 2 kilometres of the property for sale in the last 6 months that the estate agent or agent's representative considers to be most comparable to the property

**7 Wangaratta Street Eynesbury VIC 3338**
 4
  2
  2
Sold Price \$650,000

Sold Date 03-Feb-17

Distance 0.53km

**25 Maldon Drive Eynesbury VIC 3338**
 4
  2
  2
Sold Price \$695,000

Sold Date 10-Mar-17

Distance 0.49km

**6 Shepparton Street Eynesbury VIC 3338**
 4
  2
  2
Sold Price -

Sold Date 25-Jan-17

Distance 0.42km

DISCLAIMER Whilst all reasonable effort is made to ensure the information in this publication is current, CoreLogic does not warrant the accuracy or completeness of the data and information contained in this publication and to the full extent not prohibited by law excludes all for any loss or damage arising in connection with the data and information contained in this publication.

The State of Victoria owns the copyright in the Property Sales Data and reproduction of that data in any way without the consent of the State of Victoria will constitute a breach of the Copyright Act 1968 (Cth). The State of Victoria does not warrant the accuracy or completeness of the Property Sales Data and any person using or relying upon such information does so on the basis that the State of Victoria accepts no responsibility or liability whatsoever for any errors, faults, defects or omissions in the information supplied.